



# THE RESIDENCES OF SAUGANASH GLEN

## INTERIOR FINISHES

- Ceiling Heights are Approximately 10' on First Level, 9' on Second and Lower Levels
- Red Oak Hardwood Flooring throughout First Level and at Second Level Hallway
- Ventless Gas Fireplace includes Marble Hearth and Surround (per plan)
- Luxury Carpeting in Living Areas of the Lower and Second Levels (per plan)
- Oak Stairs with Colonial Oak Railings from the First Level Front Foyer to Second Level
- Ceramic Tile in Sun Room, Rear Entry and Laundry Area (per plan)
- Built-In Security System
- 6'8" High Solid Core Interior Swing Doors with Satin Nickel Finish Hardware
- All Closets include Pre-Installed White Vinyl Coated Wire Shelving
- Structured Digital Wiring Composed of (6) CAT 5 Enhanced Telephone and (6) RG-6 Cable/Satellite Outlets

## EXTERIOR FINISHES

- Brick Masonry, Stone, Vinyl Siding Compliments and Metal Finishes
- Landscaped Parkway
- Garage with Remote Control Openers (2 or 3 per plan)
- 30 Year Manufacturers' Warranty Shingled Roof
- Private, Landscaped Yard with Wood Cedar Fencing

## KITCHEN

- Cherry, Maple, Oak Wood or White Face Base and 42" Upper Wall Cabinets
- 1½" Granite Kitchen Countertop(s) including Island with Square Polished Edge and 4" Backsplash
- Stainless Steel Single Bowl Undermount Sink with Grohe™ Pull-out Sprayer Faucet

- Stainless Steel Appliance Packages:
  - Sub-Zero™ Top Refrigerator over Bottom Freezer with Ice Maker
  - Wine Cooler 24" (location per plan)
  - Thermador™ 36" Gas Range
  - Thermador™ 36" Ventilation Hood
  - 30" Microwave
  - Bosch™ Dishwasher
  - Disposal ¾ H.P.

OR

- Sub-Zero™ Top Refrigerator over Bottom Freezer with Ice Maker
- Wine Cooler 24" (location per plan)
- Thermador™ 36" Gas Cooktop
- Thermador™ 36" Ventilation Hood
- Thermador™ 30" Built-In Oven
- Thermador™ 30" Microwave
- Bosch™ Dishwasher
- Disposal ¾ H.P.

---

## FEATURES

PAGE 1 OF 2

Listing made subject to errors, omissions, change in price, prior sale and withdrawal without notice. Information deemed from reliable sources. No independent investigation has been made by Koenig & Strey GMAC into the accuracy of the information provided herein. Plans, materials and specifications are based on availability and subject to change without notice. Architectural, structural, mechanical, electrical and other assemblies may be revised, as deemed necessary by the developer, architect or as may be required by law. Floor plans are approximate and are for marketing purposes only.

Exclusively Marketed by

**Koenig & Strey** **GMAC**  
Real Estate

ksgmac.com



# THE RESIDENCES OF SAUGANASH GLEN

## BATHROOMS/POWDER ROOMS

### • **Master Bath Features:**

- Cherry, Maple Oak Wood or White Face Raised Height Vanity with Drawer Bank
- Marble Tile on Floor, Shower Walls, Shower Base, Tub Surround and Tub Front
- ¾" Marble Vanity Top with Toto™ Undermount Sinks and Grohe™ Faucets
- Toto™ Elongated Toilet
- National™ Whirlpool Tub with Grohe™ Deck Mount Faucet
- Shower Stall Poured Base, Clear Glass Semi-Frameless Chrome Door with Grohe™ Faucet
- Semi-Recessed Mirrored Medicine Cabinet

### • **Secondary Full Bath(s) Features:**

- Cherry, Maple, Oak Wood or White Face Vanity
- Marble Tile Floor and Bathtub Wall Surround
- ¾" Marble Vanity Top with Toto™ Undermount Sinks and Grohe™ Faucets
- Toto™ Elongated Toilet
- National™ Fiberglass Bathtub with Grohe™ Faucet
- Semi-Recessed Mirrored Medicine Cabinet

### • **Powder Room Features:**

- Red Oak Hardwood Flooring on First Level (per plan)
- Ceramic Tile Flooring (per plan)
- Toto™ Pedestal Sink with Grohe™ Faucet
- Toto™ Elongated Toilet
- Beveled Edge Oval Mirror

## MECHANICALS

- 200 Amp Electrical Service
- 2 or 3 Car Garage (per plan)
- Individual Electric, Water and Gas Meters
- 75 Gallon Gas-Fired Water Heater
- Separate Laundry Area with Hook-up for Washer and Gas Dryer
- Hardwired Smoke and Carbon Dioxide Detectors (per plan)

## ENERGY EFFICIENCY

- R-19 Insulation System in Exterior Walls
- R-30 Insulation Factor in Roof
- Two Individually Controlled Gas Forced Central Heat 90% Efficient Furnaces and Air Conditioning Units, Each with Humidifiers and Programmable Thermostat
- Insulated Windows and Sliding Glass Doors
- Aluminum Clad Wood Framed Windows on Front Elevation
- Weather Stripping on All Exterior Doors

---

## FEATURES

PAGE 2 OF 2

Listing made subject to errors, omissions, change in price, prior sale and withdrawal without notice. Information deemed from reliable sources. No independent investigation has been made by Koenig & Strey GMAC into the accuracy of the information provided herein. Plans, materials and specifications are based on availability and subject to change without notice. Architectural, structural, mechanical, electrical and other assemblies may be revised, as deemed necessary by the developer, architect or as may be required by law. Floor plans are approximate and are for marketing purposes only.

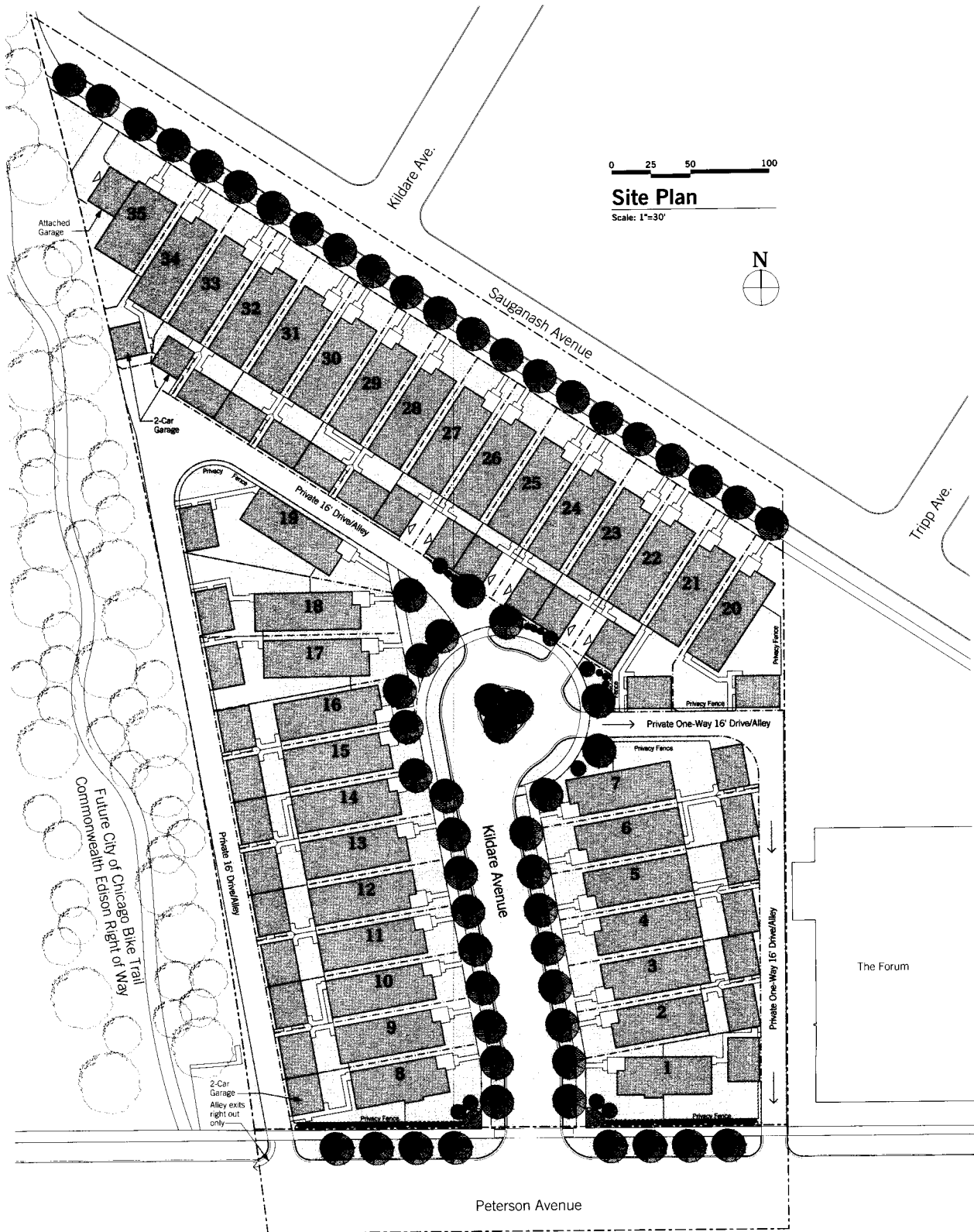
Exclusively Marketed by

**Koenig & Strey** **GMAC**  
Real Estate

ksgmac.com



# THE RESIDENCES OF SAUGANASH GLEN



## SITE PLAN FOR 4300 W. PETERSON, L.L.C.

Listing made subject to errors, omissions, change in price, prior sale and withdrawal without notice. Information deemed from reliable sources. No independent investigation has been made by Koenig & Strey GMAC into the accuracy of the information provided herein. Plans, materials and specifications are based on availability and subject to change without notice. Architectural, structural, mechanical, electrical and other assemblies may be revised, as deemed necessary by the developer, architect or as may be required by law. Floor plans are approximate and are for marketing purposes only.

Exclusively Marketed by



ksgmac.com



# THE RESIDENCES OF SAUGANASH GLEN

## ASHFORD HOMES I & II

Square Footage: 4,672

5 Bedrooms	Kitchen	Sitting Room
3½ Bathrooms	Butler's Pantry	Entertainment Room
Parlor	Breakfast Area	Family Room
Dining Room	Great Room	

## BALMORAL HOMES I & II

Square Footage: 4,672

5 Bedrooms	Kitchen	Sitting Room
3½ Bathrooms	Breakfast Area	Entertainment Room
Parlor	Great Room	Family Room
Dining Room	Sun Room	

## CHELSEA HOMES

Square Footage: 4,162

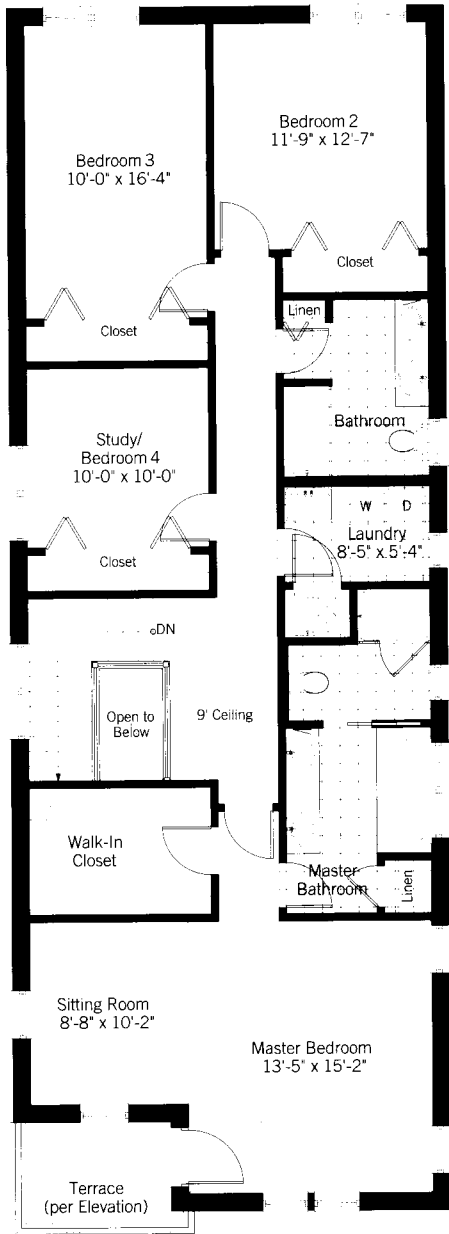
4 Bedrooms	Dining Room	Entertainment Room
Study	Kitchen	Family Room
3½ Bathrooms	Breakfast Area	
Parlor	Great Room	

*All Homes are Brick with detached 2 or 3 Car Garages.*

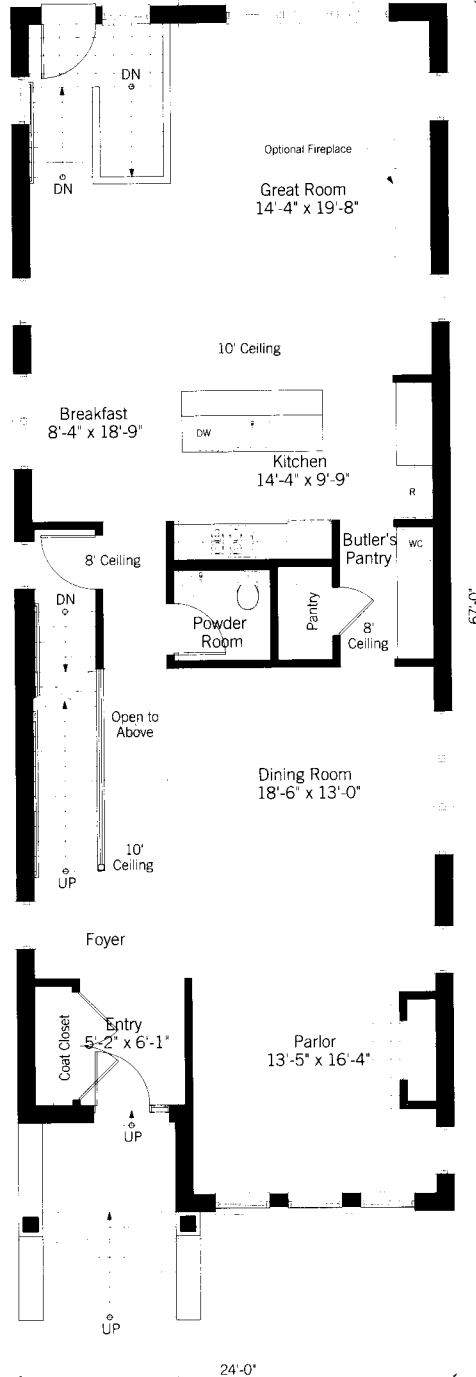
*Other Luxury Features include Finished Lower Level, Fireplace, Laundry Room, Storage Areas and Professional Landscaping.*



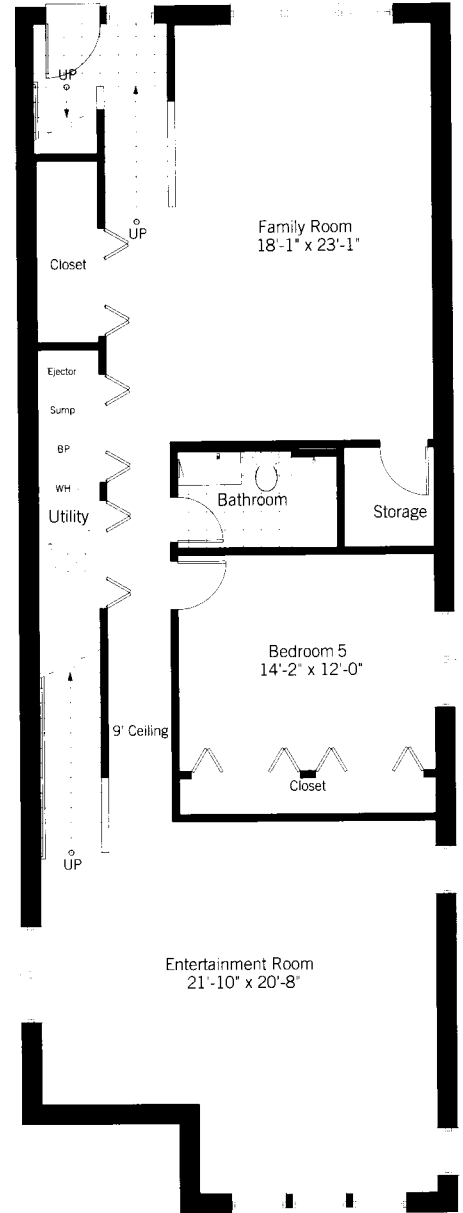
# THE RESIDENCES OF SAUGANASH GLEN



Second Level



First Level



Lower Level

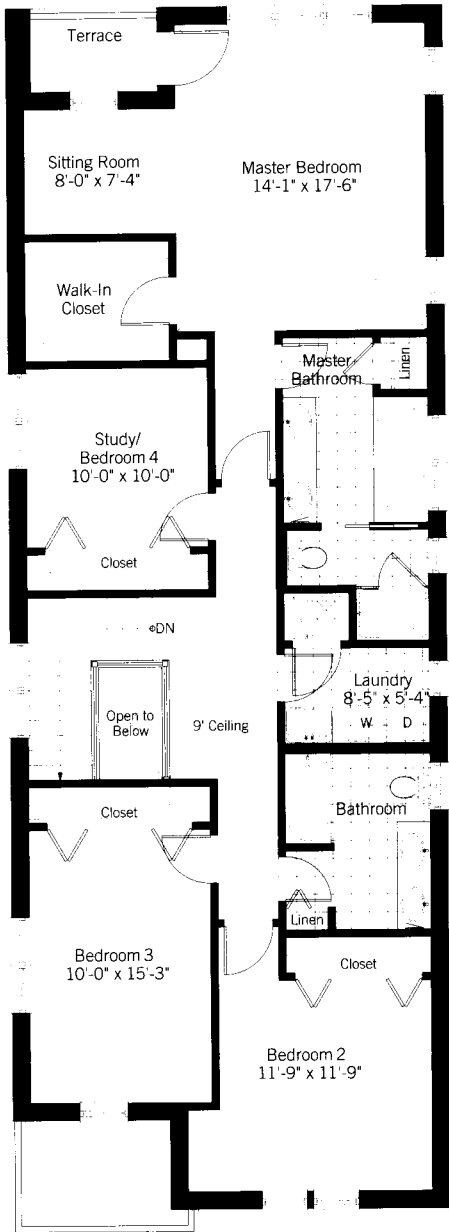
## ASHFORD I 4,672 SQUARE FOOT HOME-5 BEDROOMS, 3 1/2 BATHS

Listing made subject to errors, omissions, change in price, prior sale and withdrawal without notice. Information deemed from reliable sources. No independent investigation has been made by Koenig & Strey GMAC into the accuracy of the information provided herein. Plans, materials and specifications are based on availability and subject to change without notice. Architectural, structural, mechanical, electrical and other assemblies may be revised, as deemed necessary by the developer, architect or as may be required by law. Floor plans are approximate and are for marketing purposes only.

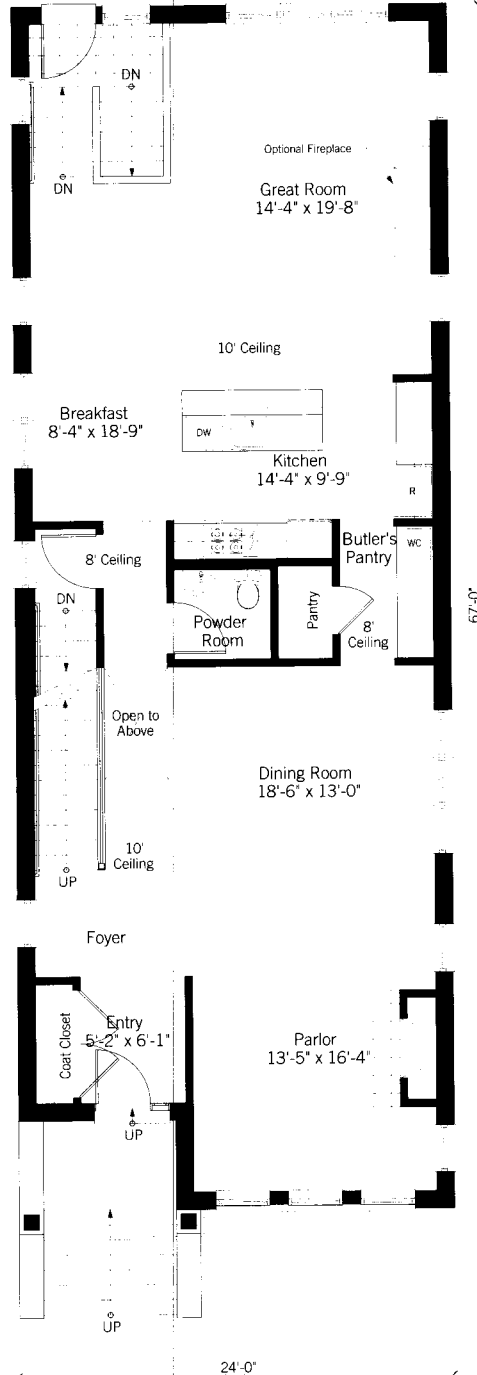
Exclusively Marketed by  
**Koenig & Strey** GMAC Real Estate  
ksgmac.com



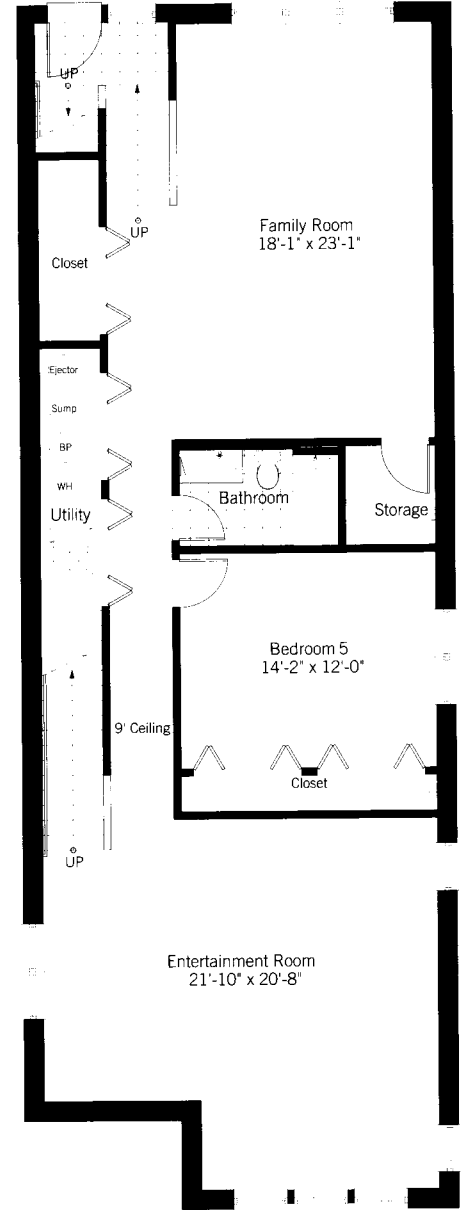
# THE RESIDENCES OF SAUGANASH GLEN



Second Level



First Level



Lower Level

## ASHFORD II

4,672 SQUARE FOOT HOME-5 BEDROOMS, 3 1/2 BATHS

Listing made subject to errors, omissions, change in price, prior sale and withdrawal without notice. Information deemed from reliable sources. No independent investigation has been made by Koenig & Strey GMAC into the accuracy of the information provided herein. Plans, materials and specifications are based on availability and subject to change without notice. Architectural, structural, mechanical, electrical and other assemblies may be revised, as deemed necessary by the developer, architect or as may be required by law. Floor plans are approximate and are for marketing purposes only.

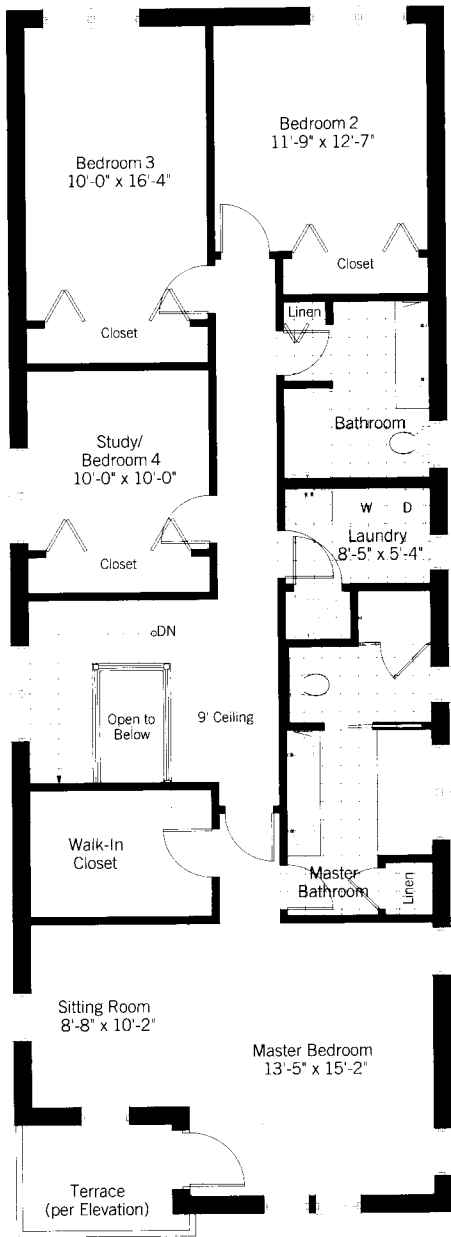
Exclusively Marketed by



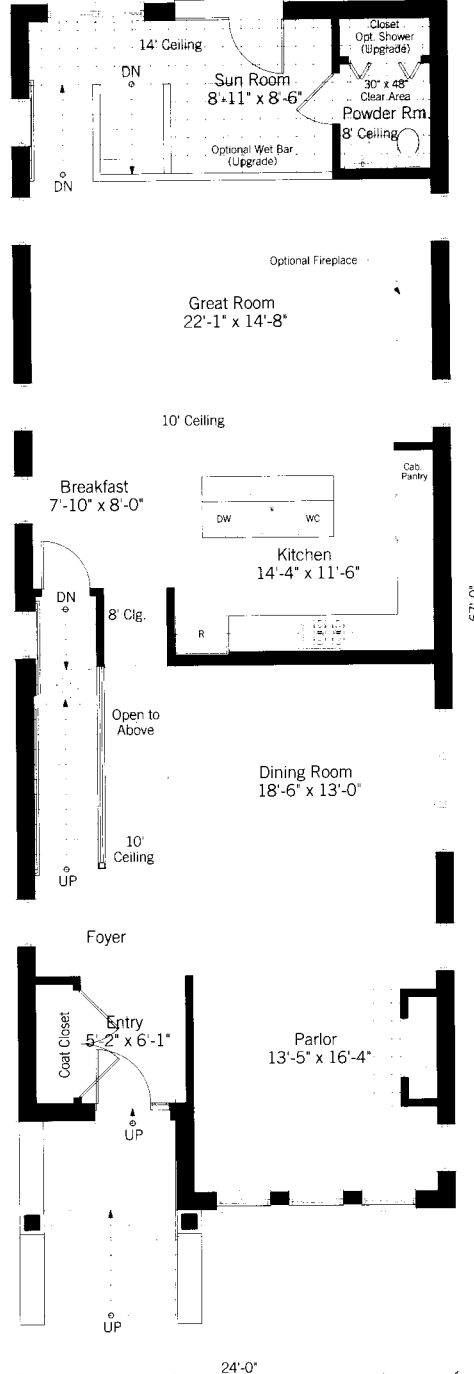
ksgmac.com



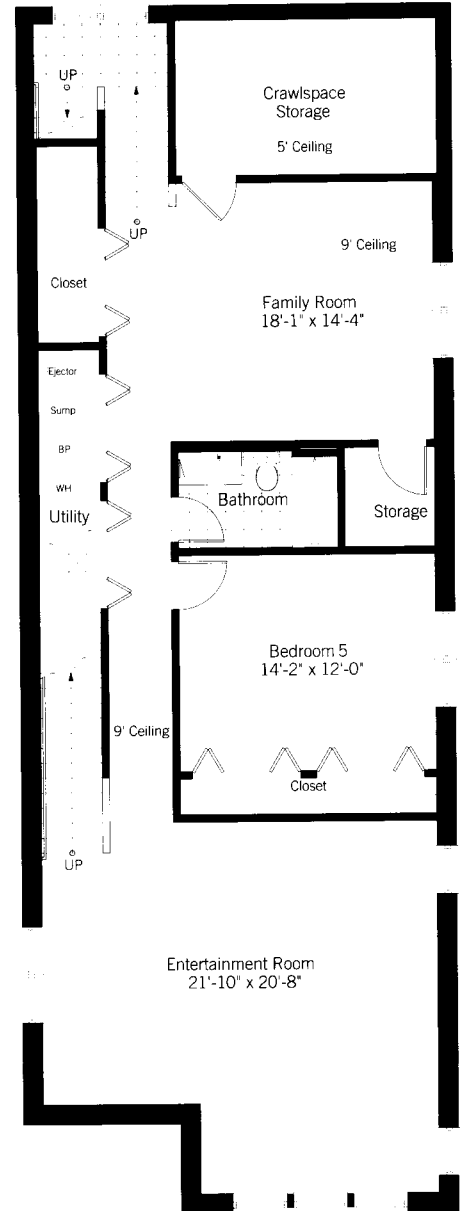
# THE RESIDENCES OF SAUGANASH GLEN



Second Level



First Level



Lower Level

## BALMORAL I 4,672 SQUARE FOOT HOME-5 BEDROOMS, 3 1/2 BATHS

Listing made subject to errors, omissions, change in price, prior sale and withdrawal without notice. Information deemed from reliable sources. No independent investigation has been made by Koenig & Strey GMAC into the accuracy of the information provided herein. Plans, materials and specifications are based on availability and subject to change without notice. Architectural, structural, mechanical, electrical and other assemblies may be revised, as deemed necessary by the developer, architect or as may be required by law. Floor plans are approximate and are for marketing purposes only.

Exclusively Marketed by  
**Koenig & Strey GMAC** Real Estate  
ksgmac.com



